

5Kv - TECK CABLE SPLICE KIT INSTRUCTIONS

(FOR 3 CONDUCTOR, UNSHIELDED CABLES)

CABLE RANGE

	Cond Size		Over Ground	Over Phase	Over Inr. Jacket	Over Out Jacket
			Dimensions in Inches			
TS5-3-2/0	#3-2/0	#3	0.178	0.6	1.23	1.57
		2/0	0.178	0.68	1.52	1.88
TS5-3/0-400	3/0-400	3/0	0.225	0.78	1.63	2.02
		400	0.252	1.07	2.21	2.64
TS5-500-1000	500-1000	500	0.283	1.16	2.38	2.78
		750	0.283	1.39	2.88	3.14
		1000	0.322	1.54	3.14	3.58

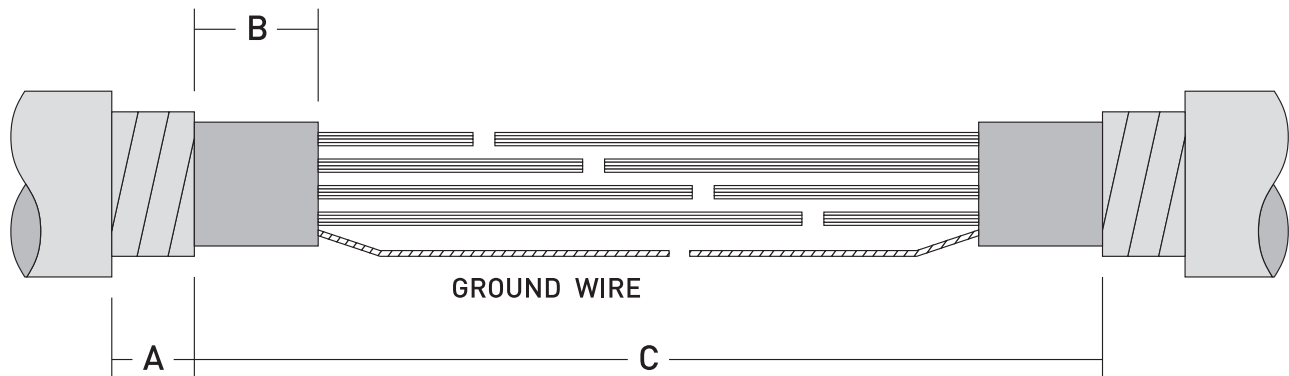
EACH KIT CONTAINS

- 3 Black Connector Insulating Sleeve
- 3 Outer Red Phase Wire Connector Sleeves
- 1 Ground connector insulating sleeve
- 1 Inner Jacket Insulating Sleeve
- 1 Outer Wraparound Jacket Insulating Sleeve
- 3 Sticks Red Mastic
- 2 Spring Ground Clamps
- 1 Roll Tinned Copper Braid.
- 1 Roll of Tinned Copper Mesh

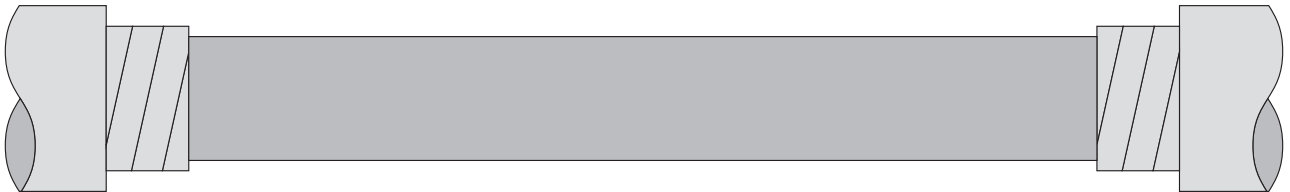
INSTRUCTIONS

- 1).
 - Remove outer coverings , overlap ends, and cut ends square
 - Cut back insulations, etc to dimensions shown below.
 - Allow for staggering of cable splice sleeves

	MAX CON LENGTH	DIM 'A'	DIM 'B'	DIM 'C'	INNER JACKET	OUTER JACKET
TS 5-3-2/0	4"	1"	1 1/2"	24"	24"	30"
TS 5-3/0-400	5"	1"	1 1/2"	30"	30"	36"
TS 5-500-1000	7"	1"	1 1/2"	36"	36"	44"

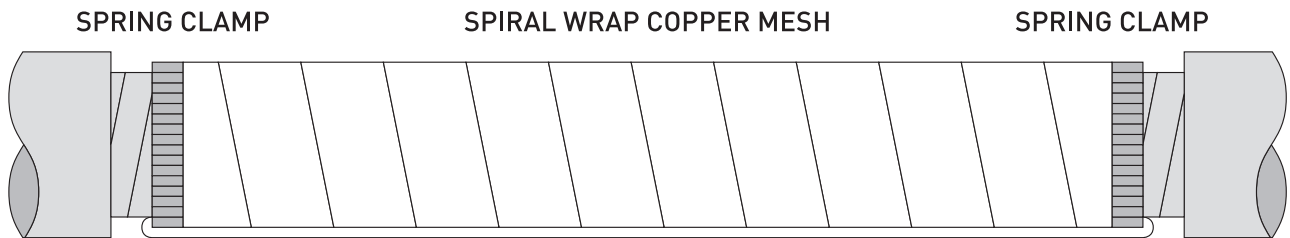


- 2).
 - Place individual insulating, heat shrink, sleeves onto cable and conductors, including Ground Wire, **BEFORE CRIMPING** connectors
 - After crimping, wrap each crimp connector with red mastic
- 3).
 - Slide black conductor heat shrink sleeves over crimp area and shrink down using a soft flame propane torch
- 4).
 - Slide red conductor heat shrink sleeves over crimp area and shrink down using a soft flame propane torch
- 5).
 - Place small dia tubing over ground wire and shrink down until tight.
- 6).
 - Place the inner jacket sleeve over the splice and onto the two exposed inner jacket ends
 - Shrink the sleeve down until tight



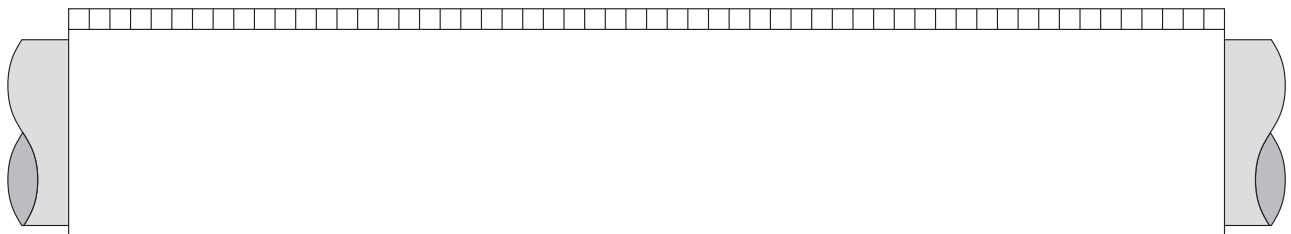
SHRINK DOWN INNER SLEEVE

- 7).
 - Spiral wrap copper mesh, starting at one end of the armour overlapping and tightly wrapping around splice, secure to armour both ends with spring clamps.
- 8).
 - Unwrap spring clamp 4 wraps and place one end of ground braid facing away from splice and rewrap spring clamp twice.
 - Fold back braid across splice and wrap with clamp.
 - Continue to other end of splice and repeat process.



GROUND BRAID

- 9).
 - Clean conductor outer jacket on both ends.
 - Centre sleeve around splice, gather both reinforcing ribs and slide on channel.
 - Start shrinking in the centre opposite channel working around towards each ends.
 - Continue heating around channel area until adhesive flows out of both ends
 - DO NOT HEAT CHANNEL AREA WITH HIGH FLAME.



CENTRE OUTER JACKET AND SHRINK DOWN

- 10).
 - Splice is now complete, and when cool, can be tested before putting into service